

NovaTel Systems

Telecommunications Application Solutions



MONEY

Money is a dedicated wholesale carrier-grade billing application. Designed in collaboration with our customers, it not only manages the production of customer bills and supplier-bill reconciliation, it also analyses financial performance. And, in conjunction with other NovaTel's applications (**Planner**, **Switch**), it provides carriers with the functionality to proactively manage their margins in near real-time.

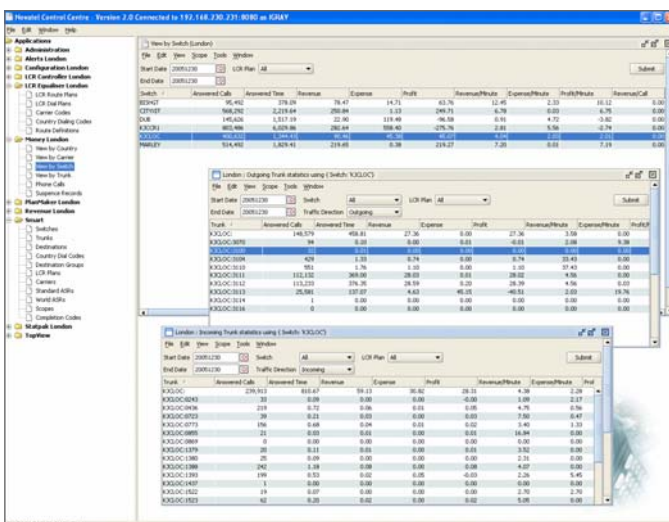
Money identifies route margin maximisation opportunities by identifying the carriers and routes that are yielding the highest margins. Its individualised rate tables for customers and suppliers can be both loaded and managed to provide real time margin analysis by route and/or by carrier in either summary or detail format.

The application's configurable real time monitoring and alert systems notify management of negative margin situations via email or SMS, allowing them to make appropriate changes/adjustments and to limit potential exposure and minimise loss. It also detects alterations to planned routings or carrier performance with drill-down functionality to individual CDRs if required.

Bills can be issued monthly either manually or automatically in electronic format (PDF) for forwarding by email to customers or hard copy as required. And billing queries are simply and easily resolved using **Money's** interactive access to CDR's, thus avoiding potentially lengthy and possibly acrimonious billing disputes.

Direct interfaces into other NovaTel applications makes **Money** an integrated management and analytical platform that can not only manage your business more effectively, but also provide a real-time "window" into the engine-room of your business.

Money can be quickly and easily implemented using NovaTel's Control Console.



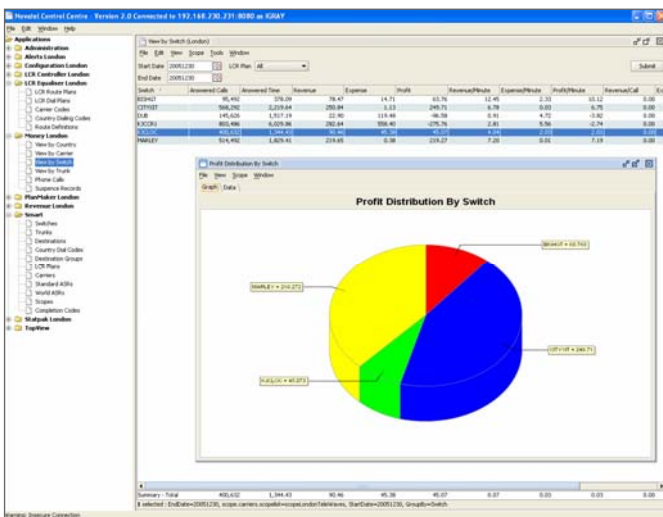
Drill-down capability for detailed analysis

MONEY Features:

- ◆ Real time margin analysis by route
- ◆ Real time margin analysis by carrier
- ◆ Separate purchase rate tables for each supplying carrier
- ◆ Separate sales rate table for each customer
- ◆ Suspense record management
- ◆ Alert systems for margin variance
- ◆ Data mart for trend analysis and reporting
- ◆ Online access to CDR's
- ◆ Automated production of wholesale bill

MONEY Benefits:

- ◆ Margin maximisation—opportunities for higher margins are quickly and easily recognised
- ◆ Reduces human error through smart management of rate tables and CDR's
- ◆ Configurable margin alerts reduces the likelihood of negative margins
- ◆ Ease of financial and operational reporting — future trends are quickly and easily recognised
- ◆ Rapid discrepancy resolution with online access to CDR's
- ◆ Significantly reduces the time required to resolve suspense records
- ◆ Automated bill production in electronic or hard-copy format
- ◆ Integrated financial and operational management



Profit Distribution by Switch

Deployment Options:

On Demand: A hosted version of the application using secure internet connections for access. Quick, simple and low in cost to set up, charged on a per user basis.

On Appliance: A turnkey delivery on the appropriate hardware which is managed on the customers behalf. Can be installed in the NovaTel data centre or in the customers own.

On Site: Outright purchase or lease of the application by the customer and installed on the customers own infrastructure.

Money can be deployed with any commercially available relational database, ORACLE, DB2, Sybase or MySQL.



Money is part of the Control Centre Suite of Applications. Other applications in the suite are **Planner**, **Switch**, **Stat** and **Roam Tracker**.

ABOUT NOVATEL SYSTEMS

NovaTel Systems, founded in 1998, is a UK based software applications and services company specialising in the development and deployment of analytical and management solutions for the telecommunication industry.

NovaTel Systems Ltd, IBEX House, 42-47 Minories, London EC3N 1DY, UK
t. +44 (0) 207 481 3400, f. +44 (0) 207 481 3450, www.novatel.co.uk